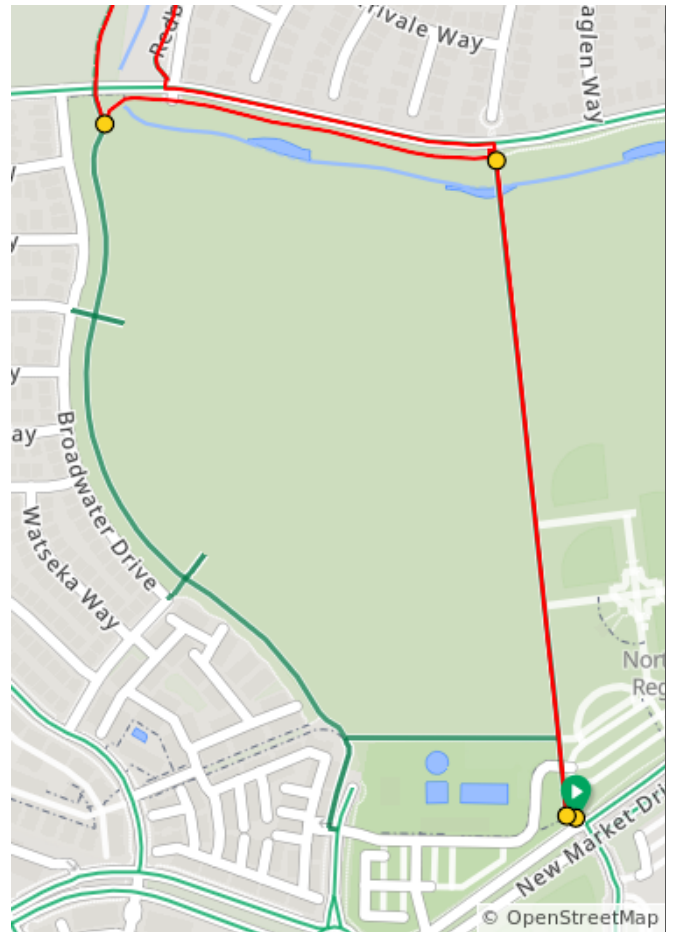




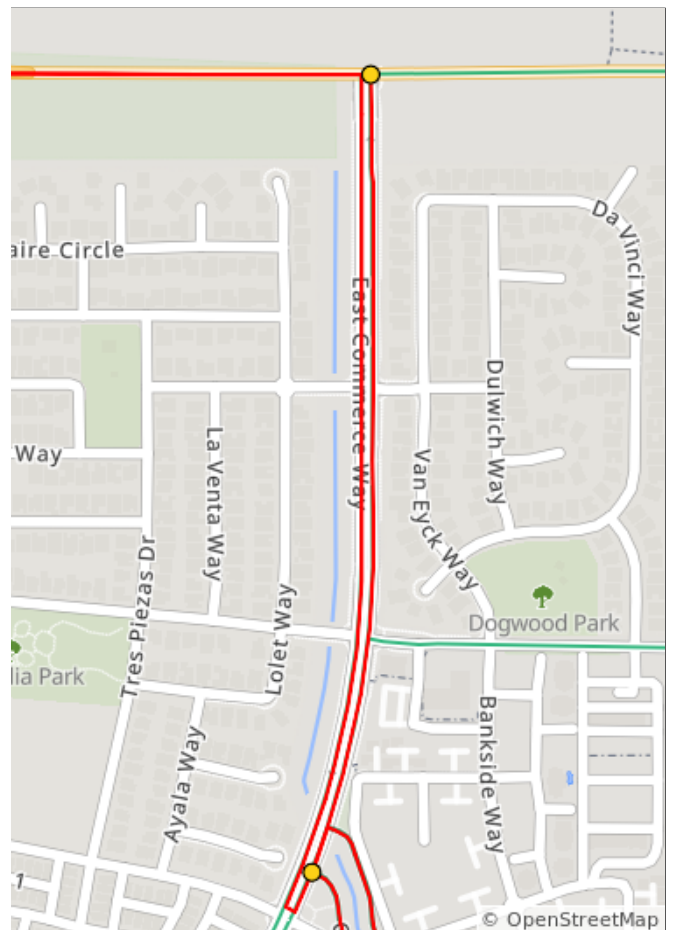
## NN Around The Airport

Num	Dist	Prev	Type	Note	Next
1.	0.0	0.0	📍	Start of route	0.0
2.	0.0	0.0	➔	R	0.4
3.	0.4	0.4	➔	L	0.3
4.	0.7	0.3	➔	Sharp R	1.0



0.7 miles. +3/-0 feet

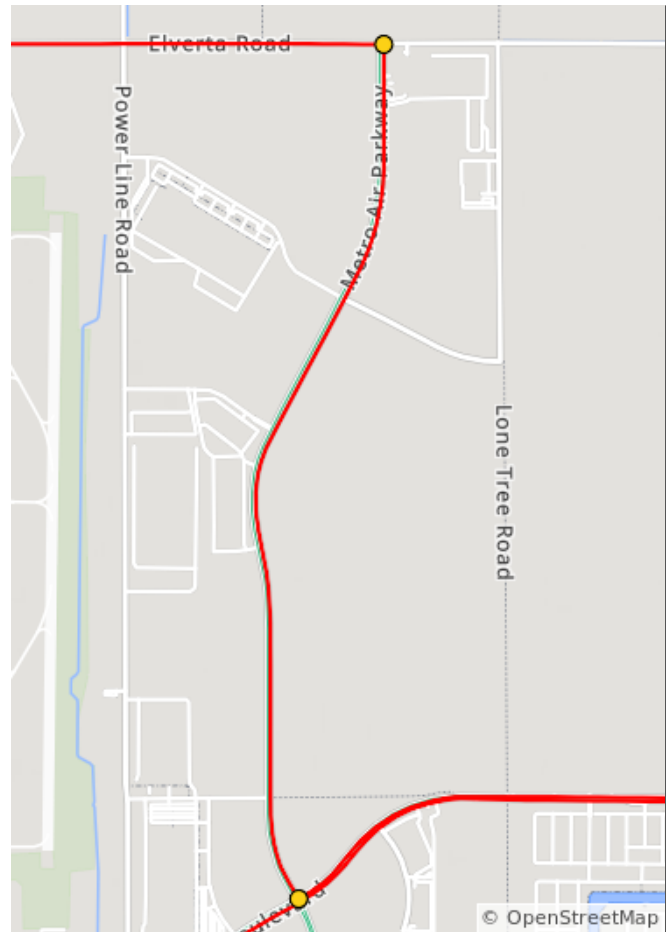
Num	Dist	Prev	Type	Note	Next
5.	1.8	1.0	➔	R onto East Commerce Way	0.5
6.	2.3	0.5	➔	L onto West Elkhorn Boulevard, E14	2.1



1.6 miles. +3/-0 feet

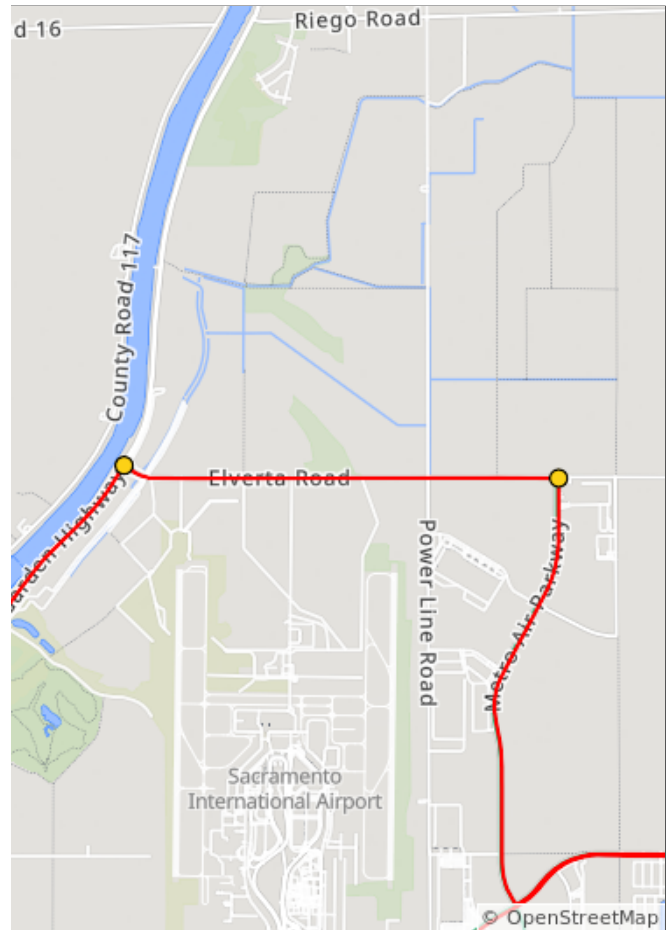
Find all North Natomas Jibe routes and cue sheets on [ridewithgps.com](http://ridewithgps.com) (join our Club there for use of premium tools).

Num	Dist	Prev	Type	Note	Next
7.	4.4	2.1	→	R onto Metro Air Parkway	2.4
8.	6.7	2.4	←	L onto Elverta Road	0.0



4.4 miles. +6/-4 feet

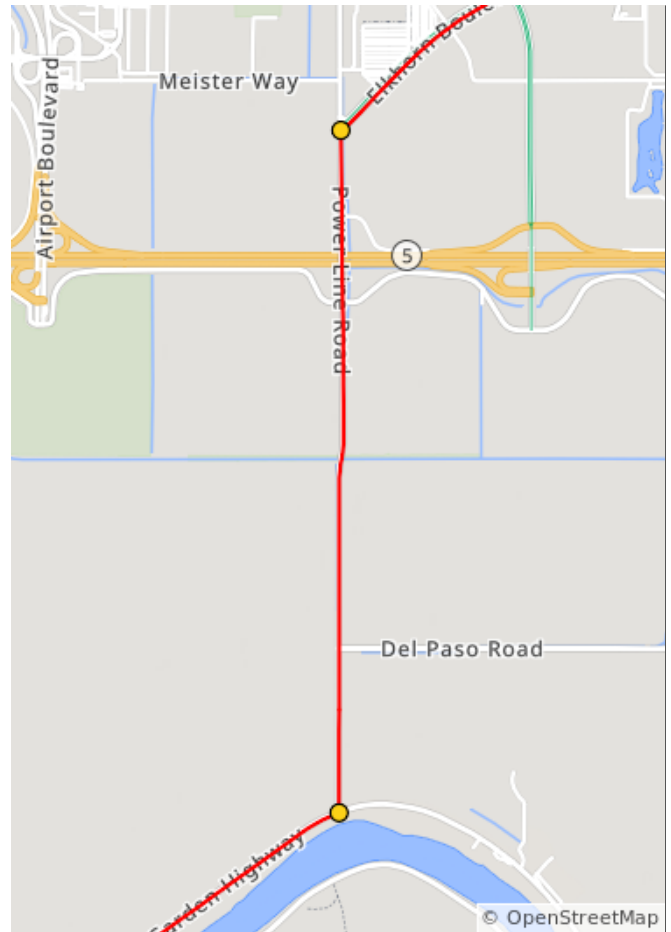
Num	Dist	Prev	Type	Note	Next
9.	6.7	0.0	↘	Sharp R onto Elverta Road	2.3
10.	9.0	2.3	←	L onto Garden Highway	7.4



2.3 miles. +12/-5 feet

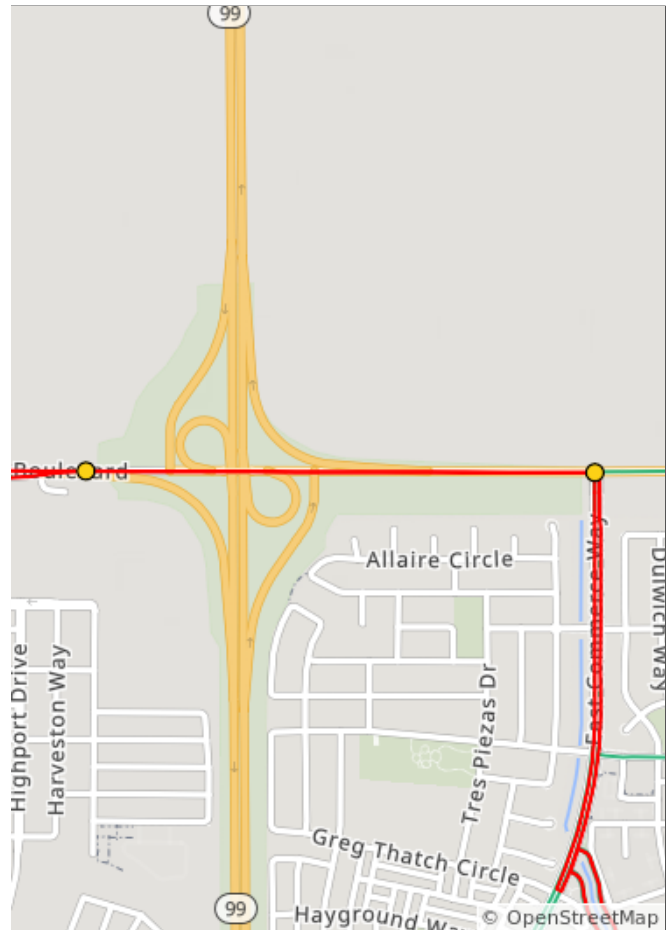
Find all North Natomas Jibe routes and cue sheets on [ridewithgps.com](http://ridewithgps.com) (join our Club there for use of premium tools).

Num	Dist	Prev	Type	Note	Next
11.	16.4	7.4	←	L onto Power Line Road	1.8
12.	18.2	1.8	→	R onto Elkhorn Boulevard	2.0



9.2 miles. +3/-19 feet

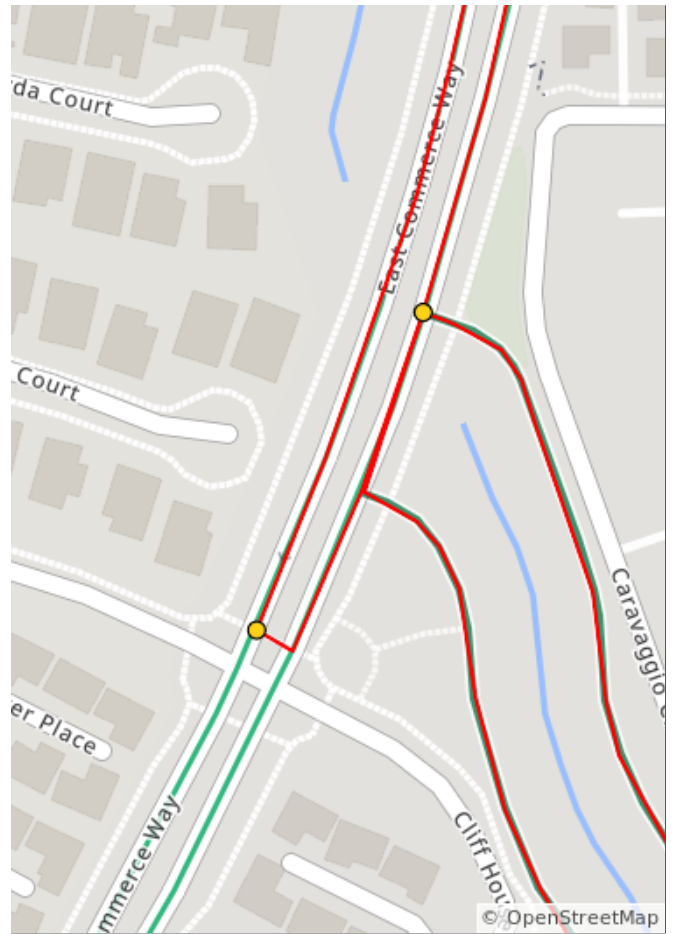
Num	Dist	Prev	Type	Note	Next
13.	20.2	2.0	↑	Continue onto West Elkhorn Boulevard	0.7
14.	20.9	0.7	→	R onto East Commerce Way	0.6



2.7 miles. +2/-0 feet

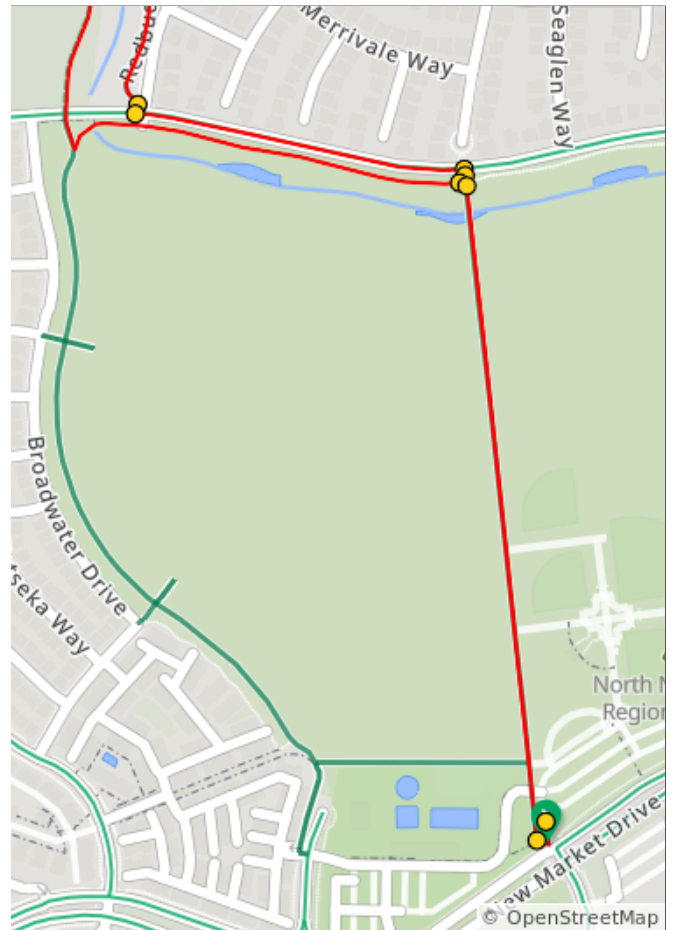
Find all North Natomas Jibe routes and cue sheets on [ridewithgps.com](http://ridewithgps.com) (join our Club there for use of premium tools).

Num	Dist	Prev	Type	Note	Next
15.	21.5	0.6	↶	Make a U-turn onto East Commerce Way	0.1
16.	21.5	0.1	→	R onto Redbud Trail	1.1



0.6 miles. +0/-0 feet

Num	Dist	Prev	Type	Note	Next
17.	22.6	1.1	→	R	0.0
18.	22.6	0.0	←	L onto North Park Drive	0.2
19.	22.8	0.2	→	R	0.0
20.	22.8	0.0	→	R	0.0
21.	22.8	0.0	←	L	0.0
22.	22.8	0.0	→	R	0.4
23.	23.3	0.4	←	L	0.0
24.	23.3	0.0	📍	End of route	0.0



1.8 miles. +0/-3 feet

Find all North Natomas Jibe routes and cue sheets on [ridewithgps.com](http://ridewithgps.com) (join our Club there for use of premium tools).